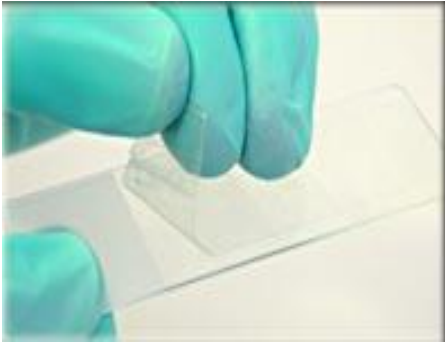


SCOTCH TEST: PINWORM SEARCH

COLLECTING INSTRUCTIONS:

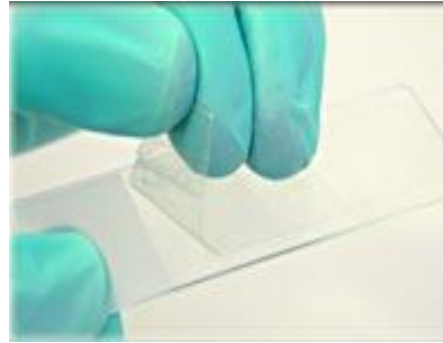


- In the morning, upon awakening apply a transparent tape strip to the skin in the perianal area.
- Apply a light pressure on it.
- Remove and stick it on a slide.
- Bring the slide to the Laboratory.

COLLECTING INSTRUCTIONS - LABORATORIO ANALISI MEDICHE ALFA MEDA

SCOTCH TEST: PINWORM SEARCH

COLLECTING INSTRUCTIONS:

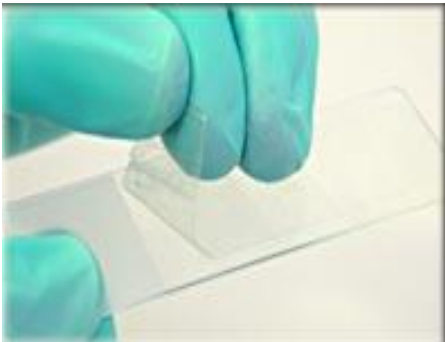


- In the morning, upon awakening apply a transparent tape strip to the skin in the perianal area.
- Apply a light pressure on it.
- Remove and stick it on a slide.
- Bring the slide to the Laboratory.

COLLECTING INSTRUCTIONS - LABORATORIO ANALISI MEDICHE ALFA MEDA

SCOTCH TEST: PINWORM SEARCH

COLLECTING INSTRUCTIONS:

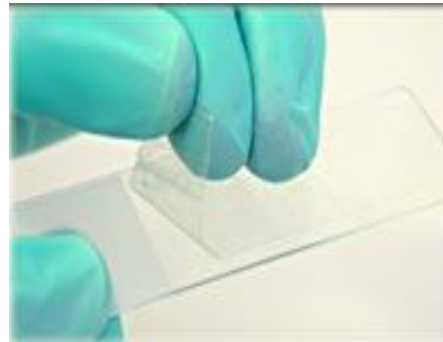


- In the morning, upon awakening apply a transparent tape strip to the skin in the perianal area.
- Apply a light pressure on it.
- Remove and stick it on a slide.
- Bring the slide to the Laboratory.

COLLECTING INSTRUCTIONS - LABORATORIO ANALISI MEDICHE ALFA MEDA

SCOTCH TEST: PINWORM SEARCH

COLLECTING INSTRUCTIONS:



- In the morning, upon awakening apply a transparent tape strip to the skin in the perianal area.
- Apply a light pressure on it.
- Remove and stick it on a slide.
- Bring the slide to the Laboratory.

COLLECTING INSTRUCTIONS - LABORATORIO ANALISI MEDICHE ALFA MEDA